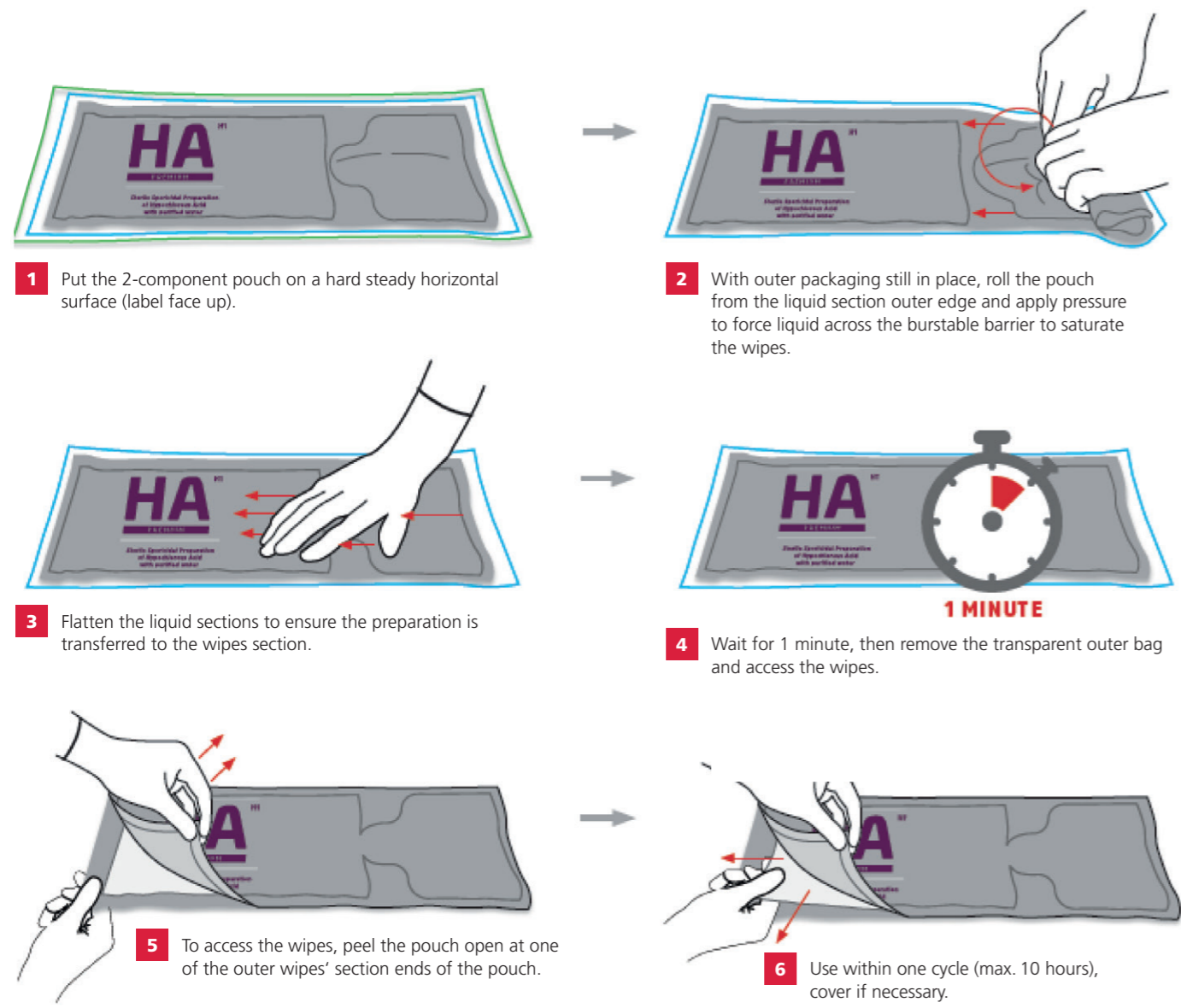
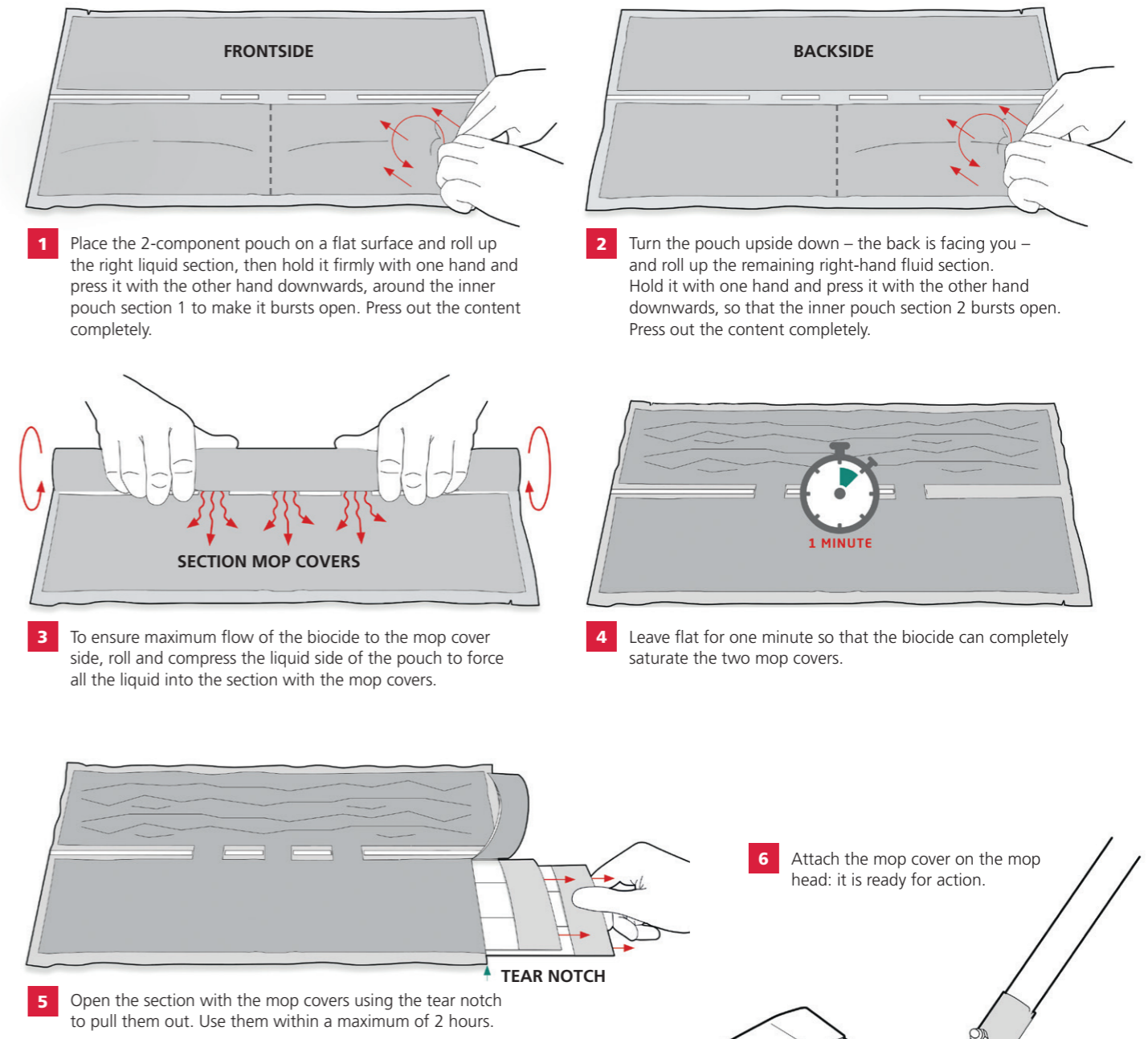


InSpec® 2-component pouches (burstable) Instructions for application preparation

Saturated cleaning wipes



Saturated mop covers

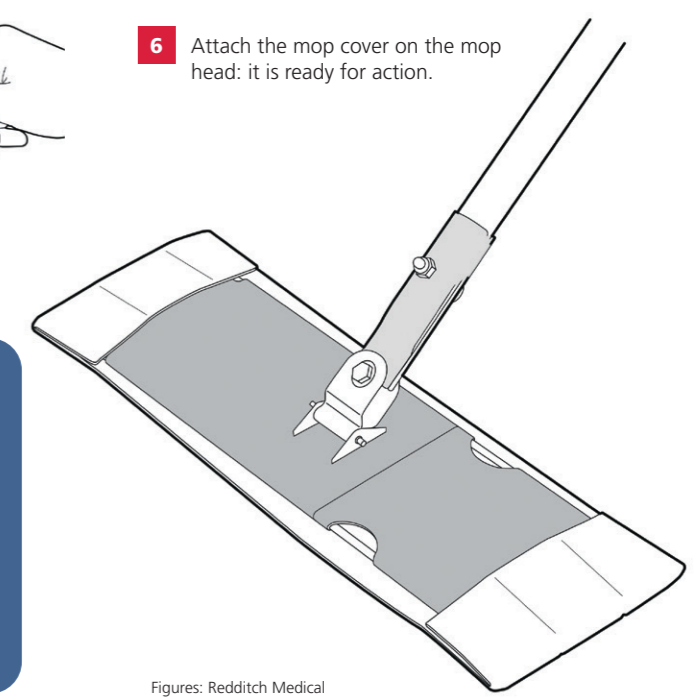


Safe application:

Always wear suitable gloves, goggles or face protection and an appropriate clothing.
Always read the label and the safety data sheet before use.

2-component pouches with wipes (15 pieces) have two, those with mop covers (2 pieces) have three inner sections, 195 ml, i.e. 390 ml ready-to-use solution.
This innovative dosage form guarantees wiping and product efficacy over the entire shelf life (12 to 24 months).
Until the time of use, the wipes and mop covers are sterile. The product should be used within a normal cleanroom working time (wipes max. 10 hrs./mop covers max. 2 hrs.).

Any combination of biocidal or sporicidal ready-to-use solutions is an ideal partner for rotational disinfection.
InSpec™ Burstable Pouches are manufactured according to GMP in an ISO 14644-1 Class 6 cleanroom. The products are filled and sealed in an ISO 14644-1 Class 5 environment.
Each pouch is delivered in two separate, fully sealed, flexible PE pouches for aseptic cleanroom transfer.



Figures: Redditch Medical